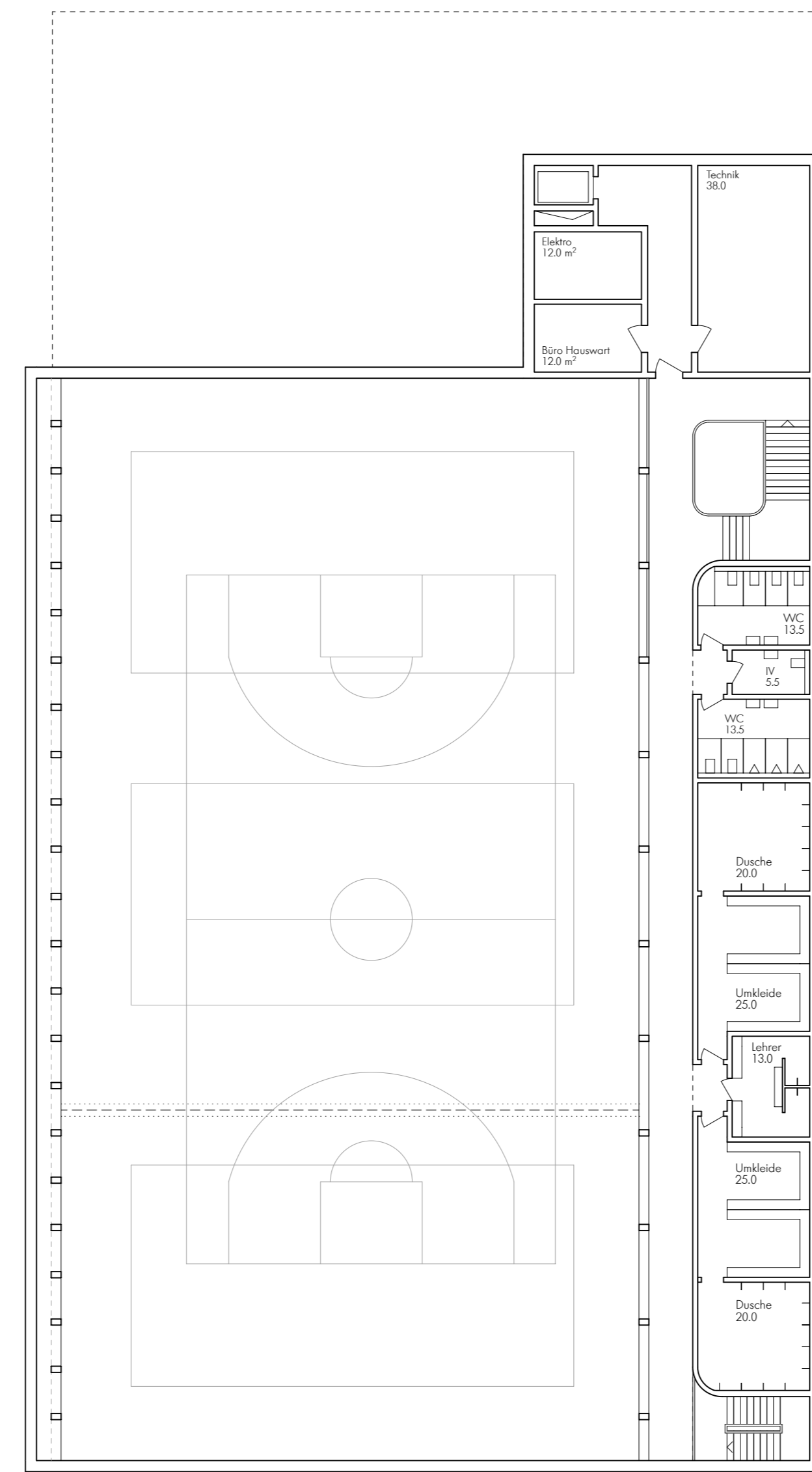
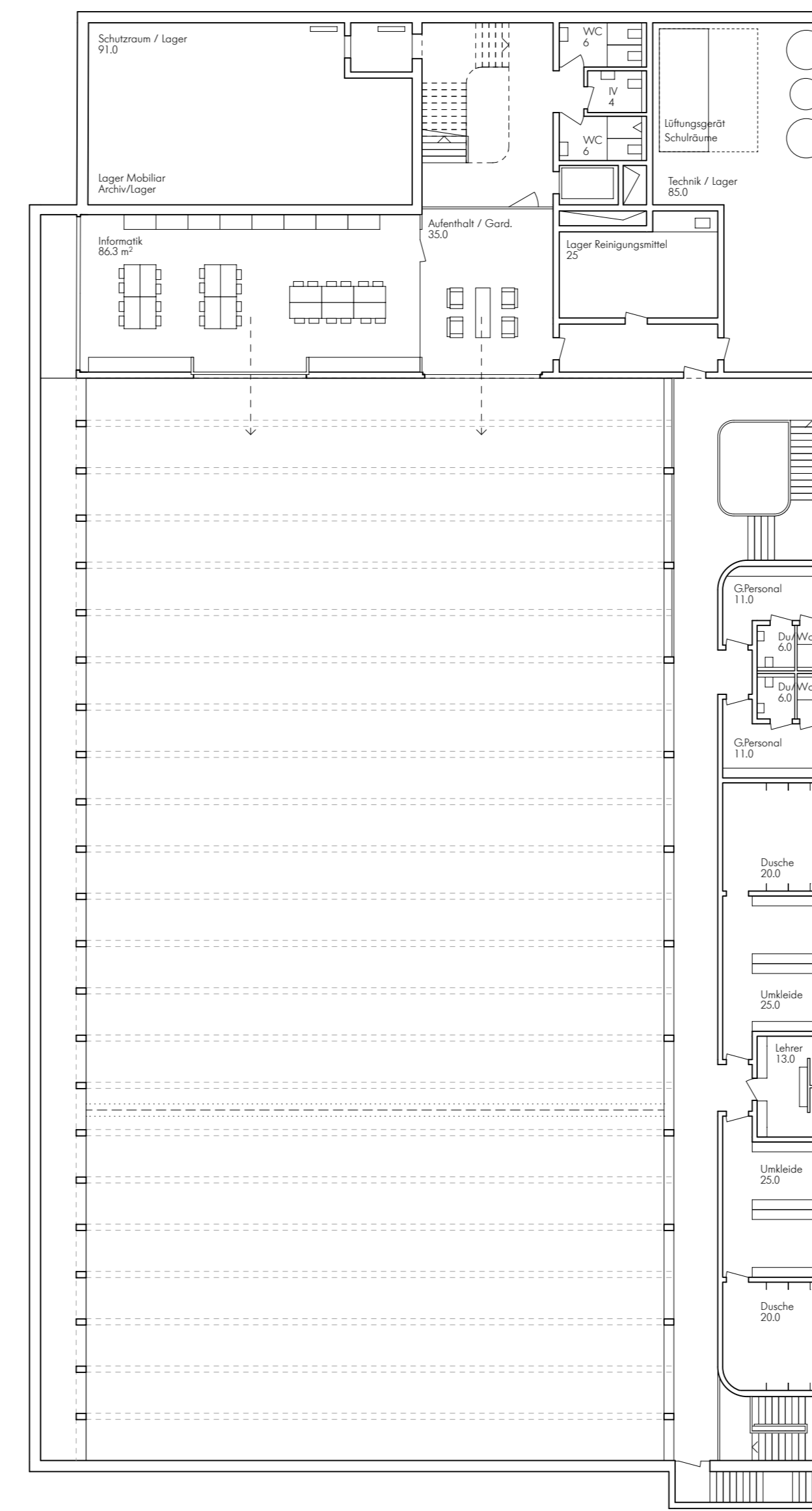


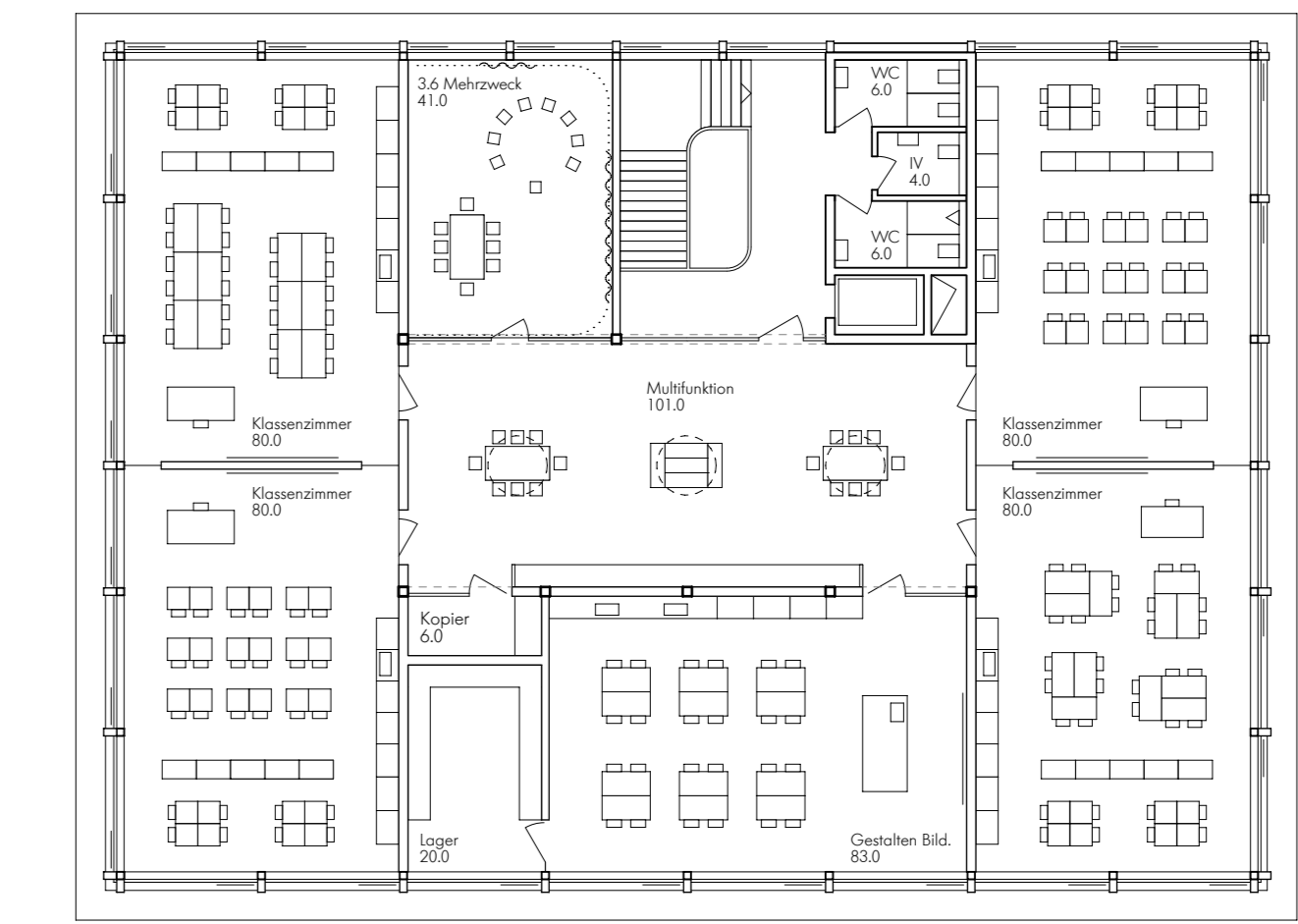
Grundriss 3.UG | Turnhalle | 1:200



Grundriss 2.UG | Turnhalle | 1:200



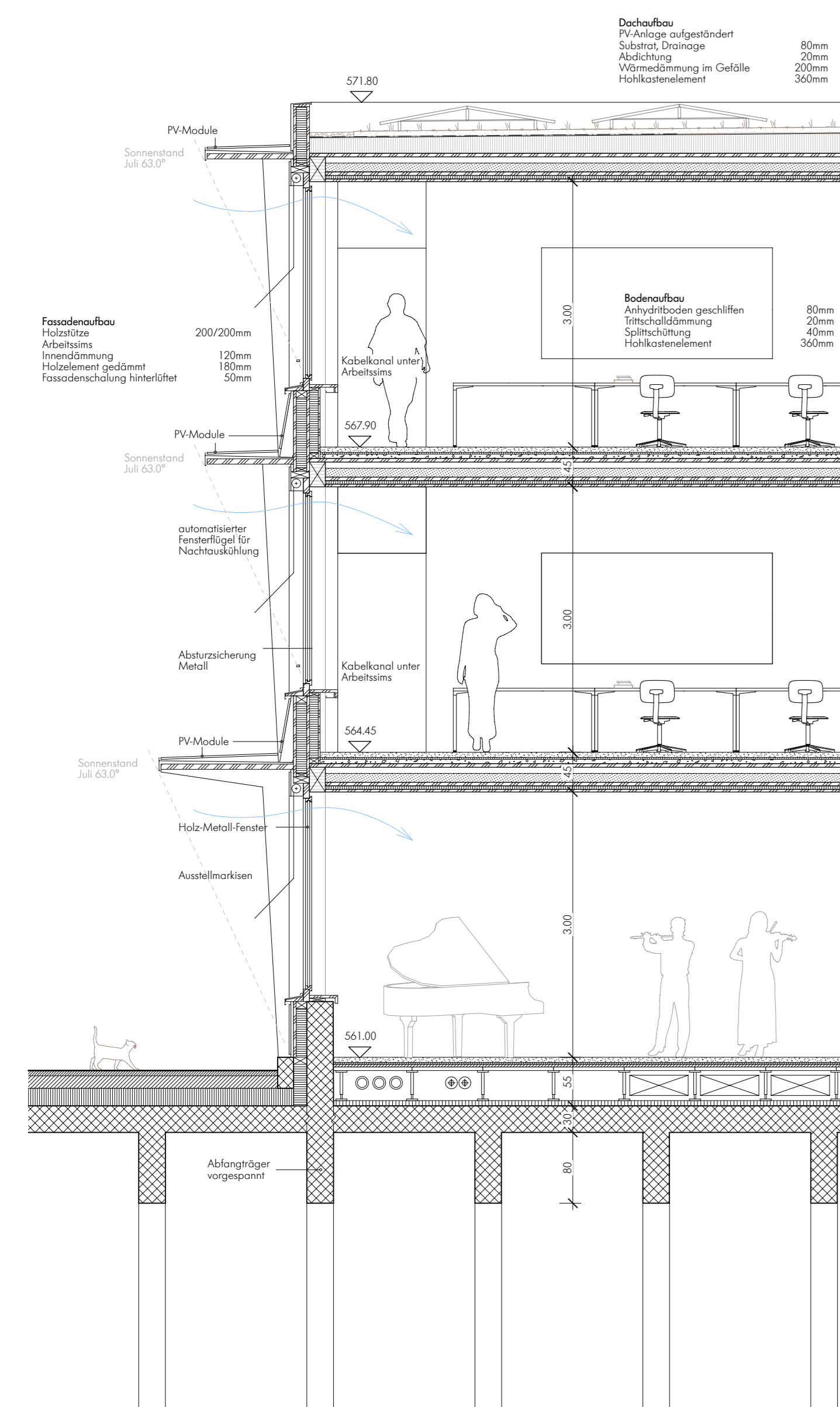
Grundriss 1.UG | Turnhalle | 1:200



Grundriss 2.OG | Primarstufe | 1:200  
Variante mit integrierten Gruppenbereich



Grundriss 1.OG | Primarstufe | 1:200



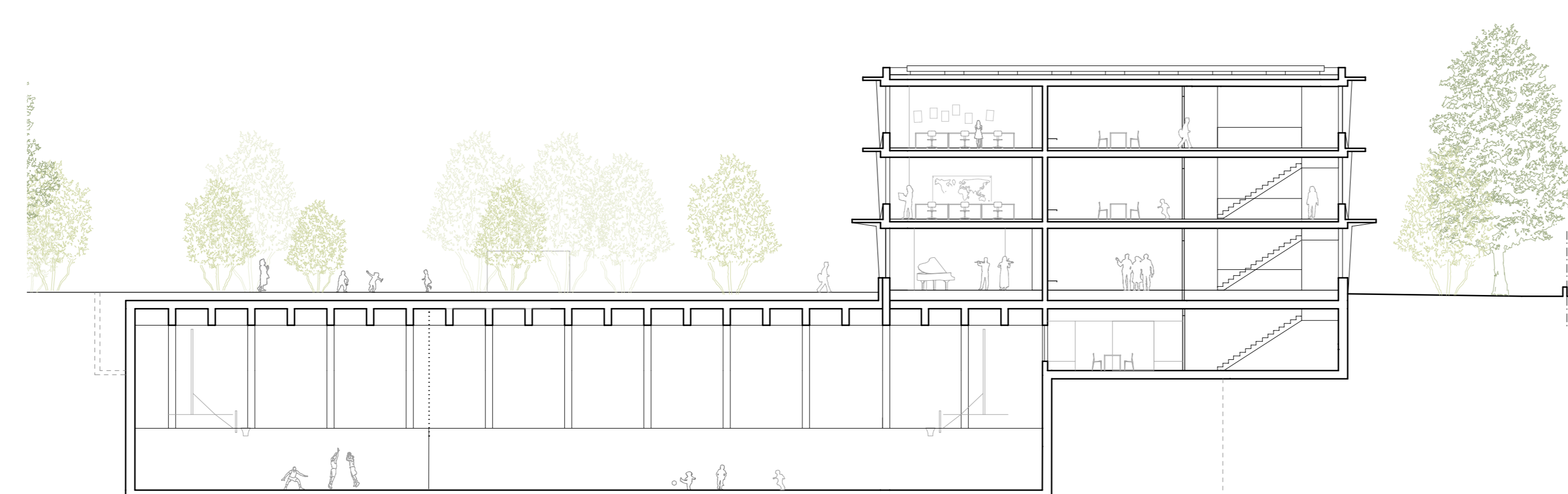
Fassadenschnitt Primarstufe | 1:50



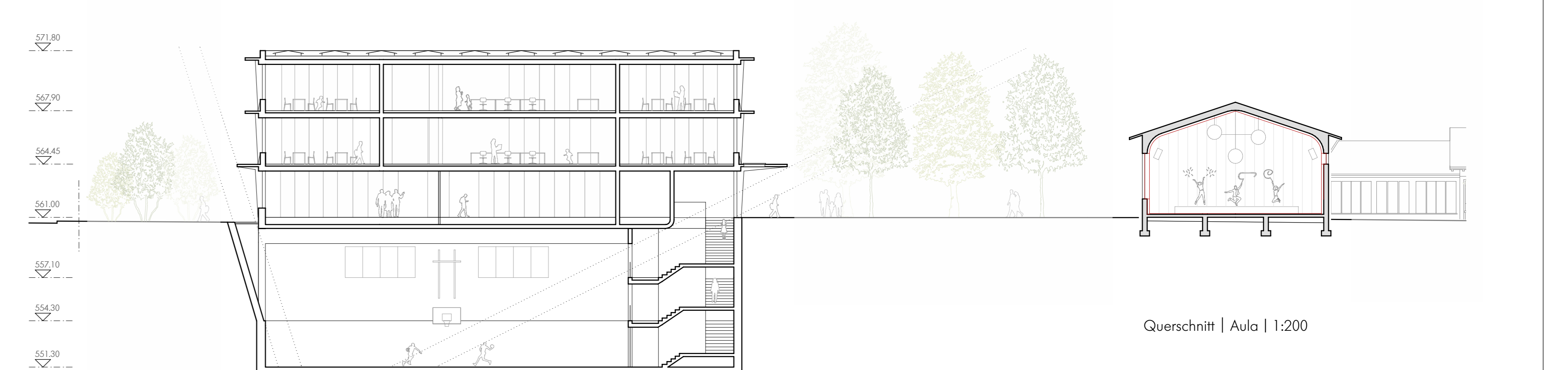
Nordostansicht | Mittelstufe & Turnhalle | 1:200



Südostansicht | Mittelstufe & Turnhalle | 1:200



Längsschnitt | Mittelstufe & Turnhalle | 1:200



Querschnitt | Aula | 1:200